



Small Area Storage Real-time Temperature/ Humidity Monitoring

This solution realizes real-time data monitoring and alarm notification. It is suitable for real-time environmental monitoring of cold rooms, labs, small warehouses and other small-area storage environments. The gateways and Bluetooth sensors can be combined together according to your own requirements. The sensors are designed to monitor field data and transmit the data to the GAEA series gateway via Bluetooth communication, and the gateway transfers the data received to Freshliance Cloud via WiFi or 4G network. All data are globally available via the cloud platform and mobile APP.



Remote data review and tracking
via APP and cloud platform



Automated data graphing,
analysis and processing



Offline data re-uploaded after
network recovery



SMS, email and APP Push alert



Report data details to minutes or
shorter, extreme value report available



Multi-level administration
access optional

GAEA Series Gateways

Model	G100-S	G1000-S
Communication Network	WiFi/Bluetooth	WiFi&LAN/Bluetooth; 4G&LAN/Bluetooth
Main Power Supply	5V/2A, Mini-USB	5V/2A, Type-C
Backup Battery	×	4000mAh/8000mAh, 3.7V (Rechargeable)
Maximum Current	≤ 90mA	≤900mA
Maximum Connections	20 sensors	
Communication Range	100m (Open air)	
Working Temperature	-30°C~+70°C	

BlueTag Series Sensors

Model	BlueTag TH10R	BlueTag TH10R-I	BlueTag TH30R	BlueTag TH30R-I	BlueTag TH30R-ETU
Communication Distance (Open Air)	112m		100m		
Weight	85g (Main device)		90g (Main device)		
External Probes	Max. 2 probes, See External Probe List				
Built-in Sensor	-30℃~+70℃, ±0.5℃ F.S.				
	0~100%RH, ±3%RH				
Temperature Units	℃, °F				
Alarms	Max. 6 alarm points				
Report	PDF/CSV				
Connection	Bluetooth 5.2				
Start Delay	0min~72h				
Logging Interval	1min~99min				
Memory Capacity	Max. 20000 readings each probe				
Device Dimensions	83mm*68mm*20.5mm				
Battery	3.7V 1000mAh rechargeable lithium battery				
Installation	Wall mounting, Folding stand, Magnetic Suction				

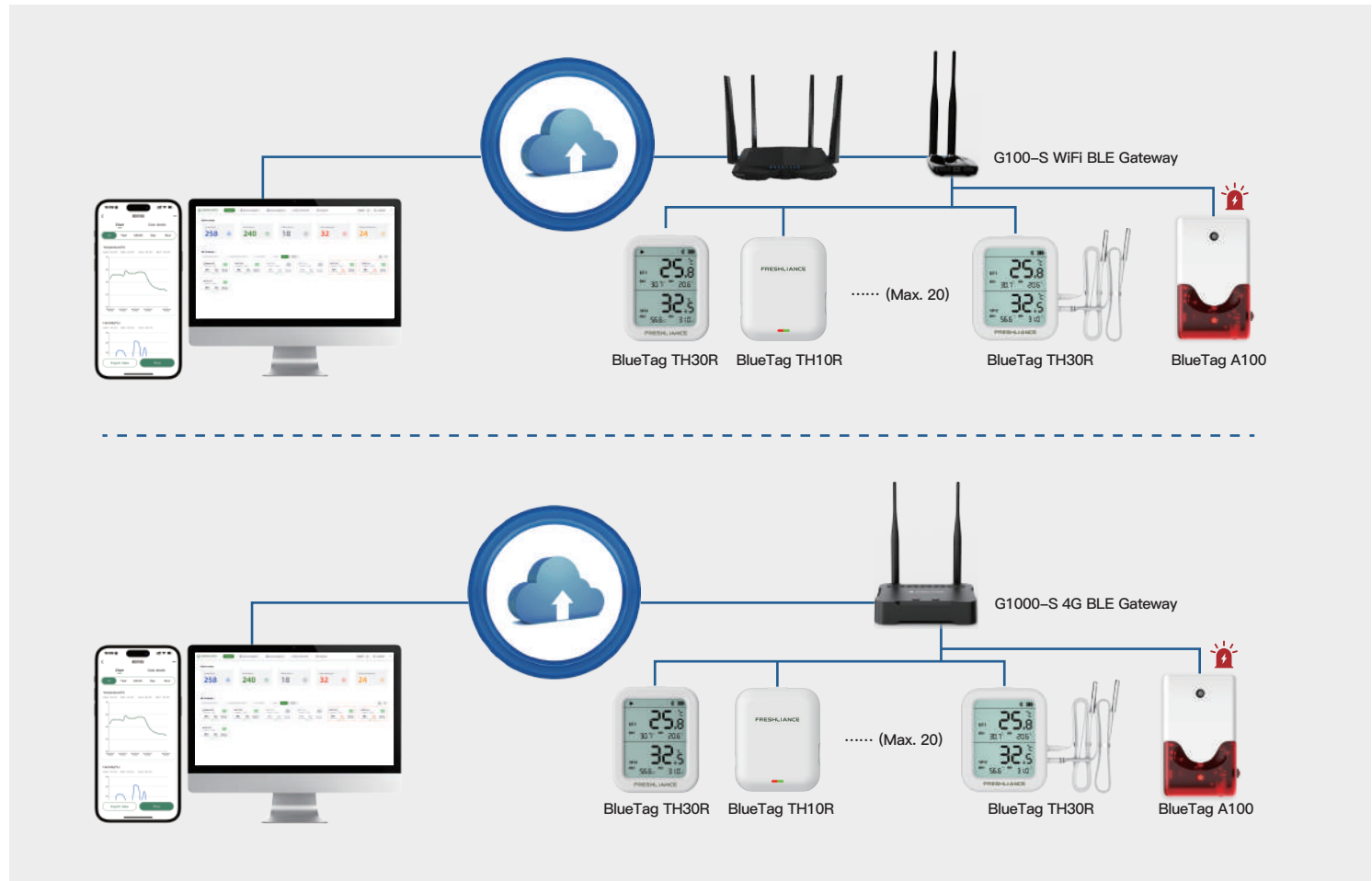
External Probe List

Probe Type	Measuring Range	Measuring Accuracy
Temperature Probe	-30°C~+70°C	±0.5°C (-30°C~+50°C) / ±1.0°C (Others)
	-196°C~+200°C	±0.5°C (-100°C~+80°C) / ±1.0°C (Others)
	-90°C~+200°C	±0.3°C (-40°C~+100°C) ±0.5°C (-80°C~-40°C; +100°C~+150°C) / ±1.0°C (Others)
Temperature and Humidity Probe	-40°C~+85°C / 0~100%RH	±0.5°C F.S. ±3%RH (25°C, 20%~90%RH) / ±5%RH (Others)
Standard cable length: 2m; Customizable length available: 5m, 10m, 15m or 20m.		

APPLICATION

This system provides a real-time environment data monitoring solution for industrial automation, engineering project, smart buildings, health care, pharmacy, laboratory, greenhouse, stock-breeding, warehouse and refrigeration storage, etc.

REAL TIME SMALL AREA STORAGE TEMPERATURE/HUMIDITY MONITORING



Freshliance Electronics Corp., Ltd. is an ISO9001-certified enterprise. It is committed to environmental logging and IOT solution development based on independent temperature verification environments. We have a professional software and hardware team in the field of Bluetooth/Lora/NFC/RF/WiFi/2G/4G/5G, etc. We strive to maintain the best quality products and service for you and are ready for your tailor-made solutions.



EN12830



GSP

DO-160