

## Large-area Storage Real-time Temperature/Humidity Monitoring

GAEA Series Gateway G2000 & LoRa Tag LT100



G2000



LoRa Tag LT100

G2000-S Gateway and LoRa temperature and humidity data loggers are combined together to build up an ultimate solution for reliable, long-range temperature and humidity monitoring in real time without complex infrastructure. The gateway effortlessly receives data from its sensors and transmits the data directly to Freshliance Cloud via 4G, WiFi or LAN network accordingly. It enables you to easily track temperature and humidity across vast areas via the mobile APP and cloud platform, and get instant notifications if any alarm data.

LoRa

Reliable LoRa long-range communication between the gateway & its sensors, deep penetration through walls and floors, etc.



Real-time monitoring via mobile APP and cloud platform



SMS/Email/APP push notifications



Breakpoint resume, no data loss in network failure



Multi-level administration access optional



Max., min. and avg. values by hour, day, week or month

### GAEA Series Gateway G2000-S

Model	G2000-S	Communication Network	WiFi&LAN/LoRa 4G&LAN/LoRa
Communication Distance	≥400m (Open air)	Maximum Connections	50 sensors
Working Temperature	-30°C~+70°C	Maximum Current	≤ 900mA
Main Power Supply	DC 5V/2A, Type-C	Backup Battery	4000mAh/8000mAh, 3.7V (Rechargeable)

LoRa Tag Series Sensors

Model	LoRa Tag LT100	Communication	LoRa ( ≥ 400m, open air)
Temperature Range	−30℃~+70℃	Temperature Accuracy	±0.5℃ F.S.
Humidity Range	0~100%RH	Humidity Accuracy	At 25℃, ±2%RH typical; ±3%RH (20%~80%RH); ±5%RH (Others)
Start Delay	0min~1d	Logging Interval	1 min~4h
Memory Capacity	Max. 3,000 readings	Battery	4000mAh lithium battery (Rechargeable, DC 5V/2A)
Battery Life	> 2 years (Uploading interval: 5min)	Installations	3M adhesive tape, wall mounting
Dimensions	101mm*60mm*34mm	Weight	162g

External Probe List

Probe Type	Measuring Range	Measuring Accuracy
Temperature Probe	−30℃~+70℃	±0.5℃ (−30℃~+50℃); ±1.0℃ (Others)
	−90℃~+200℃	±0.3℃ (−40℃~+100℃); ±0.5℃ (−80℃~−40℃; +100℃~+150℃); ±1.0℃ (Others)
	−196℃~+200℃	±0.5℃ (−100℃~+80℃); ±1.0℃ (Others)
Temperature and Humidity Probe	−40℃~+85℃	±0.5℃ F.S.
	0~100%RH	±3%RH (25℃, 20%~90%RH); ±5%RH (Others)

Standard cable length: 2m; Customizable length available: 5m, 10m, 15m or 20m.

APPLICATION

This system is suitable for the real-time environmental tracking and alarm of large-scale sites such as warehouses, manufacturing plants, hospitals, server rooms and office buildings.



Office Building



Warehouse

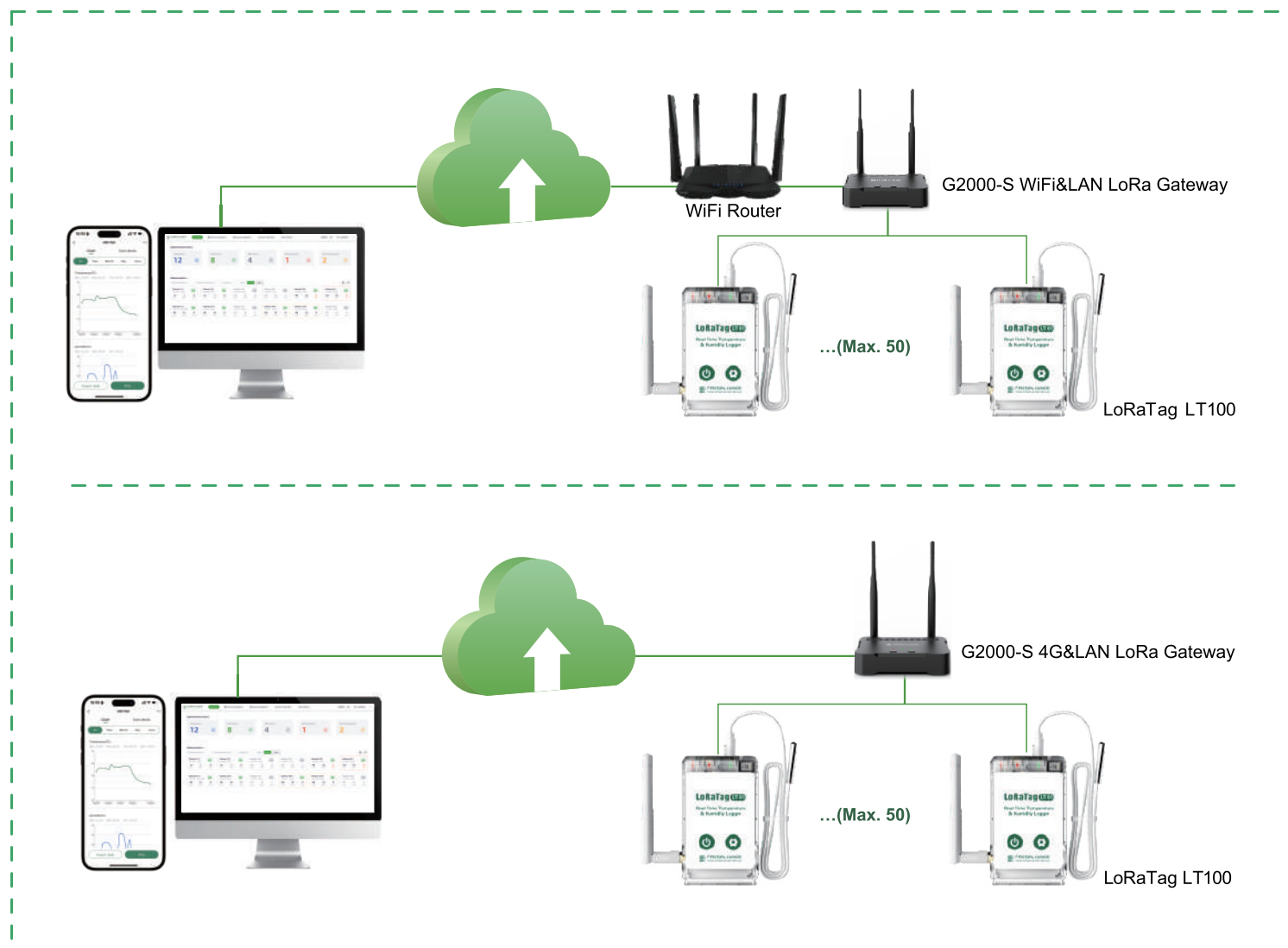


Hospital



Server Room

# REAL-TIME TEMPERATURE & HUMIDITY MONITORING FOR LARGE-AREA STORAGE



Freshliance Electronics Corp., Ltd. is an ISO9001–certified enterprise. It is committed to environmental logging and IOT solution development based on independent temperature verification environments. We have a professional software and hardware team in the field of Bluetooth/Lora/NFC/RF/WiFi/2G/4G/5G, etc. We strive to maintain the best quality products and service for you and are ready for your tailor-made solutions.



EN12830



GSP

DO-160